



**2000 CESBA
Survey Report:**

A Summary of Findings

Prepared for
The Ontario Association of Adult and Continuing Education
School Board Administrators (CESBA)
By Paul Enns

May 2001

Table of Contents

1. Purpose and Background	3
2. Survey Findings	
2.1. School Board Information	4
2.2. Adult and Continuing Education (ACE) Incorporation	4
2.3. Funding	4
2.4. Ownership of ACE Program Facilities	4
2.5. ACE Program Offerings	5
2.6. ACE Program Sites	5
2.7. ACE Enrolment	6
2.8. Marketing Strategies: Use and Effectiveness	6
2.9. General Interest Fees	7
2.10. Special Programs and Services	7
2.10.1. Staffed Career Centres	7
2.10.2. Off-Site Programs	7
2.10.3. Other Special Programs	7
2.10.3.1. Blended Credit	7
2.10.3.2. Personal Support Worker	8
2.10.3.3. Adolescent Alternative	8
2.10.3.4. Computer-Based Instruction	8
2.10.4. Community Liaison	8
2.11. Adult Day Credit Learner Profile	8
2.12. Staffing	9
2.13. Trends and Issues	10
2.13.1. Programs Opportunities for Learners	10
2.13.2. ACE Programs and Services: Adequacy of Funding	11
2.13.3. Revised Prior Learning (PLAR) Requirements: Anticipated Impact on Credit Enrolment	11
2.13.4. Other Urgent Issues	11
3. Observations	11
4. Recommendations	14
5. Acknowledgements	15
6. Appendices	
A School Board ACE Contacts	16
B Program Offerings by Board	19
C ACE Program Contacts	23
D Other Urgent Situations in ACE	28

1. Purpose and Background.

The Ontario Association of Adult and Continuing Education School Board Administrators (CESBA) annually conducts a survey on behalf of its membership. This survey is designed to gather information regarding any changes in adult and continuing education (ACE) programs and personnel and to obtain feedback on current and anticipated program-related issues faced by the CESBA membership. The survey results have historically been compiled and presented as a raw data report for the membership to peruse and for the CESBA Executive to use as a policy analysis and action formulation tool.

However, a large number of funding, organizational and program changes over the past few years have been introduced which have had a significant impact on the delivery of ACE programs in Ontario school boards. These changes include

- Changes to the level of day school funding for adults twenty-one years of age and over
- The amalgamation of a number of Ontario's school boards
- Changes in the nature and level of funding to school boards
- The introduction of an "85 factor" for Ontario certified teaching and administrative staff

These and other changes resulted in the need for a more extensive information survey to serve as the basis for policy formulation and action by CESBA, by the Ministry of Training, Colleges and Universities (MTCU) and by the Ministry of Education (EDU). In 1999, CESBA and MTCU co-sponsored the 1999 CESBA/MTCU Survey, which included summaries, an analysis, observations and some recommendations

This year, again, CESBA has teamed up with MTCU to sponsor a CESBA survey and report.

Incorporating suggestions included in last year's survey, this year's survey was streamlined and shortened in order to make it easier to complete. While some anecdotal information was solicited, most of the information gathered could be represented in charts or graphs so that patterns could be more easily discerned. There was also an intention to make comparisons between 1999 and 2000 where noticeable and significant patterns emerged.

The survey was distributed in December of 2000 and the information gathered was to pertain to data collected in the year 2000.

It should be noted that coterminous boards in several parts of Ontario have combined their adult and continuing education programs into single organizations, even though the parent boards themselves have remained separate entities. The Upper Grand District School Board and the Wellington Catholic District School Board were not part of the amalgamation process in 1997 and have had a shared ACE organizational structure for a number of years now. The Conseil des écoles publiques de l'Est de l'Ontario and the Conseil scolaire de district catholique de l'Est Ontarien are amalgamated boards that have combined their ACE programs more recently. This year, the two sharing French boards submitted data separately so that the possible number of school boards with ACE programs becomes seventy-one instead of seventy-two.

Of the possible seventy-one boards, fifty-six (78.9 %) responded with information. For a variety of reasons, various boards did not complete all parts of the survey. There were fifteen boards, including the Toronto District School Board that did not submit any information. All of these boards have ACE programs. Of the responding boards, fifteen indicated that they do not have ACE programs at present

2. Survey Findings

Survey findings were derived from survey responses and compiled into thirty-four thematic charts. Following is a summary of these findings including some observations and recommendations based on

these charts.

Note:

A compilation report containing these charts will subsequently be distributed to school board ACE contacts by electronic mail.

2.1 School Board Information

Almost half (49 percent) of responding school boards in which ACE programs are offered have less than 25,000 day school (non-adult) students. This percentage is smaller than last year because a number of the smaller boards did not respond this year. Twenty-two percent of responding boards with programs were larger boards having greater than 50,000 adolescent students.

Seventy-eight percent (56 of 72) of Ontario's school boards have ACE programs.

2.2 Adult and Continuing Education Incorporation

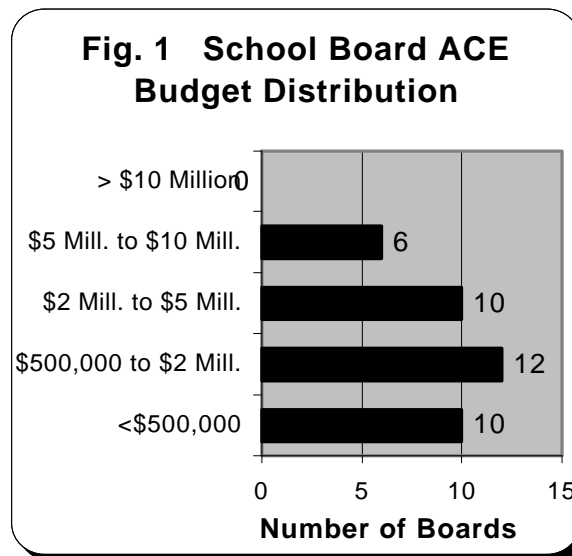
This year, two boards indicated that their ACE departments were incorporated, while four indicated that they were considering incorporation.

2.3 Funding

Ninety-eight percent (eighty-two percent in 1999) of responding boards indicated an expectation that ACE programs be operated on a cost recovery basis. Four boards reported an income generation expectation.

Forty-two percent reported budgets of greater than \$2 million.

On average, eighty-two percent of school board ACE funding comes from provincial government sources.



2.4 Ownership of ACE Program Facilities

All responding school boards with ACE programs indicated that they operated at least some of their programs in board-owned facilities. Approximately two-thirds of these (68 percent) had more than 75 percent of their programs in board facilities. Sixty-three percent of boards operated ACE programs in leased facilities. Thirteen percent had more than one-half of their ACE programs in leased facilities.

2.5 ACE Program Offerings

The most common ACE programs in school boards (offered in eighty-five percent of responding school boards) are adult day credit and summer school make-up and remedial. Night school credit and international languages (elementary) are offered in 82 percent of boards. Literacy and basic skills (77%) and adult ESL, correspondence/self study, and summer school new credit (74%) are offered in a significant

majority of responding school boards. Over half (59%) of responding school boards provide adolescent alternative programs. (See Appendix B for a complete listing of ACE program offerings by board.)

After school literacy and numeracy programs for students were offered in only 7 of 22 responding boards. Similar programs for parents were offered in only 2 of the responding boards. Funding followed by program awareness were given as the main reasons for not offering these programs.

Eleven boards indicated that they were offering or were planning to offer *transfer courses* in 2000-2001. Of these, the vast majority (10 of 11) was offering them as summer programs. Only two boards were offering transfer courses as evening of day school offerings. Of the twenty-three boards responding to this section, almost half indicated that not offering transfer courses was due to issues of awareness and funding.

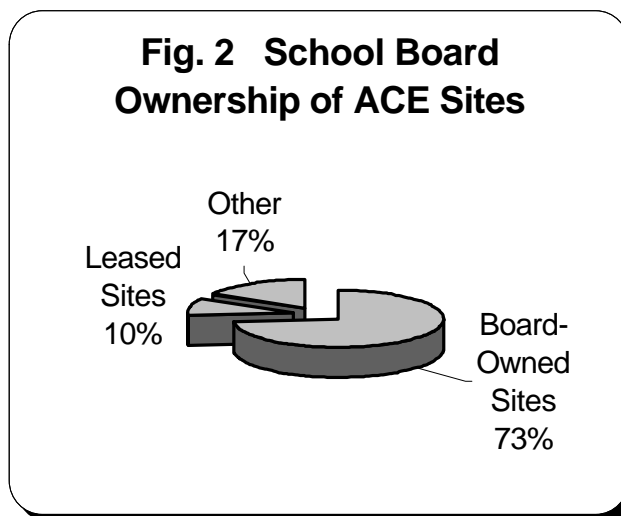
Twenty-seven boards indicated that they were offering *summer remedial programs*. All of these boards were offering the Grade 8 remedial program, with 21 offering Grade 7, 18 offering Grade 9 and 14 boards offering Grade 10.

Out of thirty-three responding boards, 42 percent were offering *fee-based training programs*. Of fifty-seven training sites, more than three-quarters (77%) were being offered in non board-owned facilities. For the responding ten boards, annual training enrolments ranged from 30 to 3,000 with an average of 500.

One-third of responding boards, reported the offering of Human Resources Development Canada (HRDC) sponsored programs. Most of these boards (11 of 13) offered programs in *career decision-making*.

2.6 ACE Program Sites

Twenty-two of fifty-six responding boards reported a total of 1,337 program sites. (Often, several ACE programs share a site). International languages (elem.) accounted for the greatest number of sites (180), while adult ESL programs were close behind at 179 sites. The greatest numbers of *leased sites* were associated with adult ESL, LINC, and LBS programs. Adult ESL reported more sites under "other" than the two remaining categories combined. Additional programs with large numbers of non-Board, non-leased sites were LINC, international languages (elem.) and LBS.



2.7 ACE Enrolment

Enrolment data submitted was to reflect totals for the year 2000 (except for summer school). This total of 439, 631 registrants, from 32 submitting boards averages out slightly under 14,000 per board. Total enrolments of the largest programs were as follows:

Adult ESL	71,891 learners
Elementary International Languages	71,722
Night School General Interest	58,535
Correspondence/Self Study	31,396

Summer School Make-Up Credit	26,670
Night School Credit	26,422
Adult Day Credit	24,050

There was insufficient data submitted to report on Average Daily Enrolment (ADE) patterns.

Nineteen boards estimated total ACE enrolment figures of 208, 494 or 10, 973 per board.

2.8 Marketing Strategies: Use and Effectiveness

Thirty-eight of the responding boards indicated that they are actively marketing their ACE programs.

Boards rely most heavily on the use of brochures and on word of mouth in advertising their ACE programs.

While more than two-thirds of responding boards indicated the use of the internet for marketing, low board ranking of this strategy (2.2 out

Fig. 3 Distribution of Marketing Strategies Used by Board ACE Departments

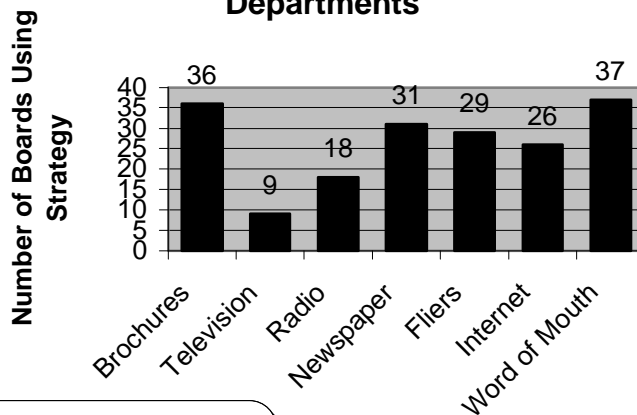
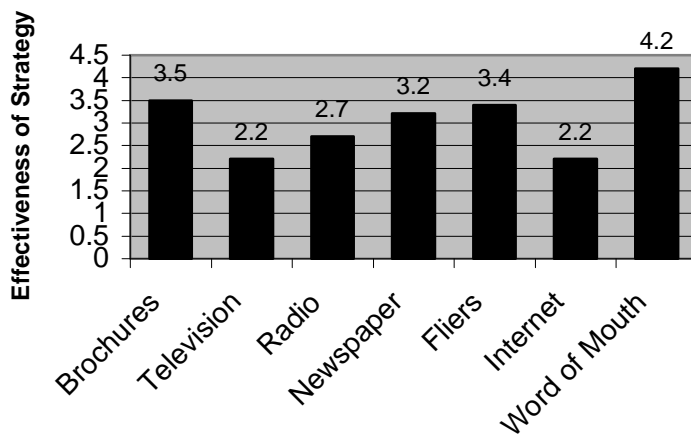


Fig. 4 Estimated Effectiveness of Marketing Strategies (Out of 5)



of 5) gave little support to its use.

Word of mouth was ranked as being the most effective marketing strategy.

2.9 General Interest Fees

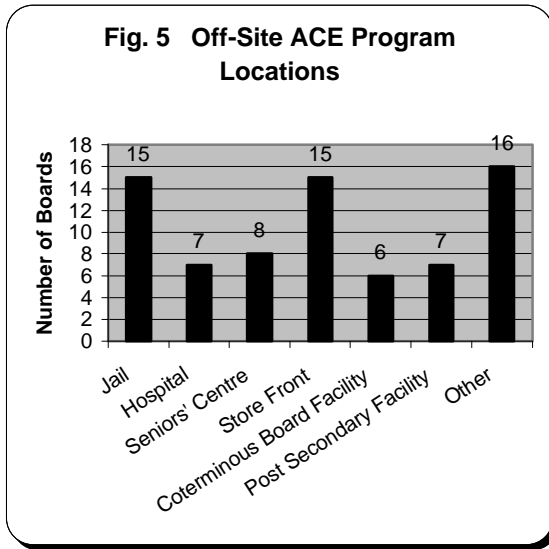
Of the twenty-four responding boards, well over half (58 percent) had general interest fees greater than \$4.00 per class hour.

2.10 Special Programs and Services

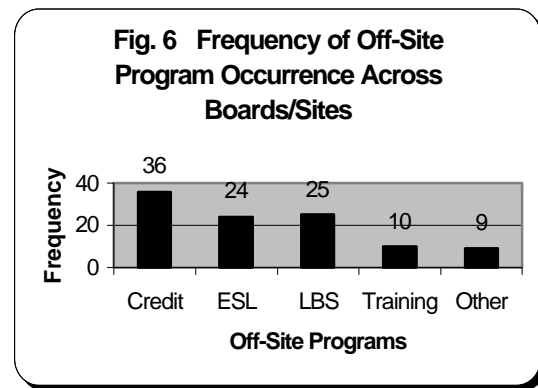
2.10.1 Staffed Career Centres

Twelve boards reported operating staffed career centres under the auspices of their ACE departments. Fourteen (58 percent) of the twenty-four sites being operated were in board-owned facilities. All twelve boards offered career counselling while educational counselling (10 boards) was offered in most boards. Only five sites were reported to be offering personal counselling. Eleven boards offered other programs on site.

2.10.2 Off-Site Programs



Fifty-five percent of all responding boards indicated that they were offering *off-site credit* and/or *non-credit* programs. Almost one-third of responding boards offered credit programs in prison locations



2.10.3 Other Special Programs

2.10.3.1 Blended Credit

Of the thirty-eight responding boards, almost three-quarters (74 percent) said that they offer credits to learners both over and under 21 years of age in the same setting, either in day school or night school locations. Blended credits are offered in one-half of adult day schools in responding boards. This compares to a figure of 61 percent in 1999.

2.10.3.2 Personal Support Worker

Thirty-six percent (8 of 22) of those boards responding to this section indicated that they were offering *Personal Support Worker* programs.

2.10.3.3 Adolescent Alternative

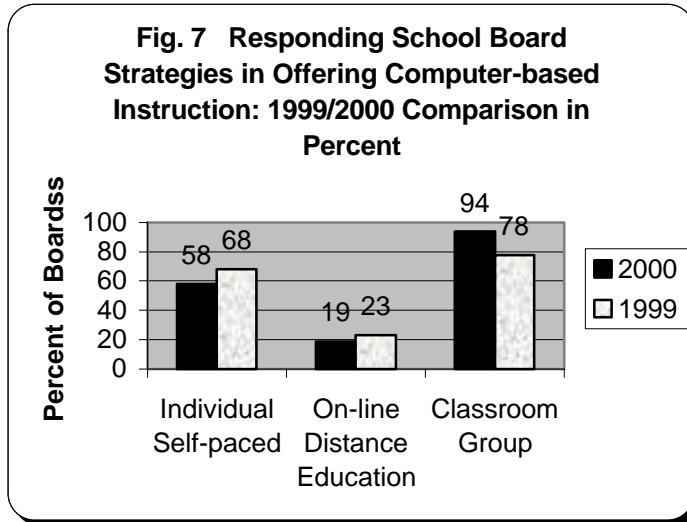
Forty-five percent of responding school boards offer adolescent alternative programs under the ACE umbrella. This compares to forty-six percent in 1999. Respondents indicated that approximately one-third of these (35 percent) were programs that were behavioural in nature.

2.10.3.4 Computer-based Instruction

Over eighty percent of responding boards (31 of 38) indicated that they offer computer-based instruction. (This compares to approximately 75 percent in 1999.)

Ninety-four percent of these offer classroom-based computer instruction.

Individual self-paced instruction is offered in well over half (58%) of responding boards.

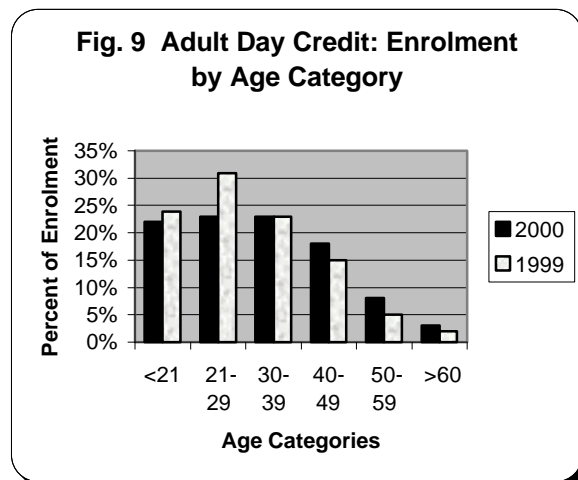
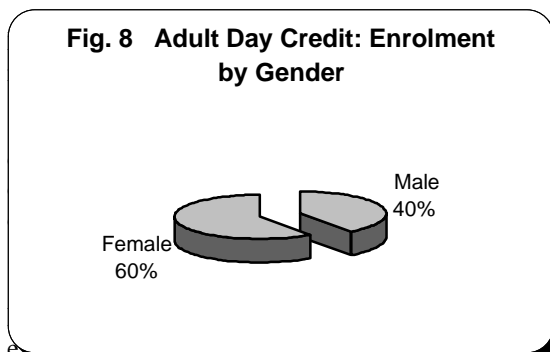


2.10.4 Community Liaison

Of the twenty-nine boards indicating community planning participation, eighty-six percent were involved through their *Literacy and Basic Skills* programs. About two-thirds were involved through their *Local Boards*.

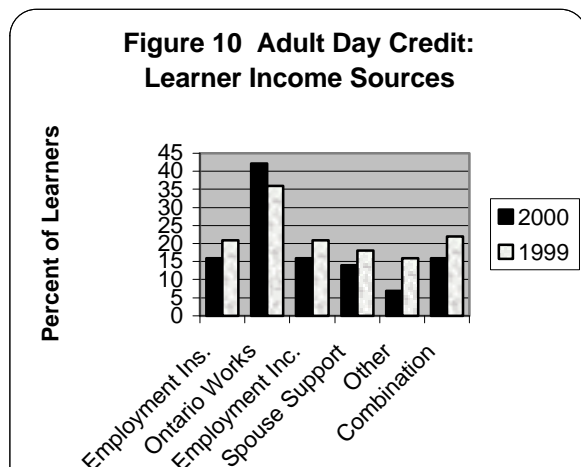
2.11 Adult Day Credit Learner Profile

As can be seen from Figure 8, the majority of learners in Ontario's adult day credit schools are female.



ponding boards reported that adults in their 20's represented the largest group in *adult day credit* programs (See Figure 9). In 2000, responding boards reported lower numbers in this group, but equal to the number of learners in their 30's.

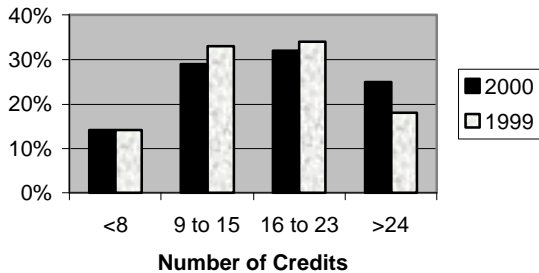
Twenty-one boards reported an average of 55 percent of their adult day credit learners on income support. The largest group receiving



income support is that which is participating in the Ontario Works program (42 percent of learners). The percent of learners on income support is reportedly down in all categories in 2000 except Ontario Works.

Again in 2000, boards reported that fourteen percent of adult day new credit registrants had less than eight credits. This year, an increased number of new registrants (25% versus 18% in 1999) had more than 24 credits.

Fig. 11 Adult Day Credit: Average Number of Credits per New Registrant



Thirty responding boards also reported an average of 6 percent of all learners in each of the following special groups of learners: Aboriginals, seniors, people with disabilities

Seven of thirty-three responding boards indicated a program of tracking graduates. Of these boards, 86 percent indicated that greater than 71% percent of graduates were either in school or working after one year.

2.12 Staffing

Boards reported average hourly rates ranging from \$75.00 for credit teachers on salary to \$15.44

for non-credit teachers.

Hourly rates paid to credit (non-salaried) staff ranged from \$27.33 to \$40.00 and averaged out at \$33.38. For non-credit staff, the rates ranged from \$31.55 to \$15.44 with an average salary of \$25.38. Average salaries in all categories increased

Fig. 12 ACE Staff Wages: Average Hourly

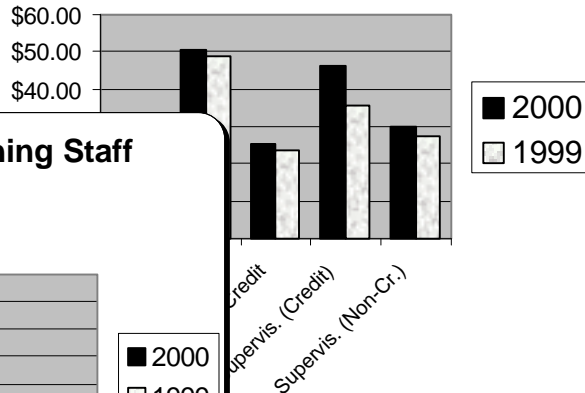
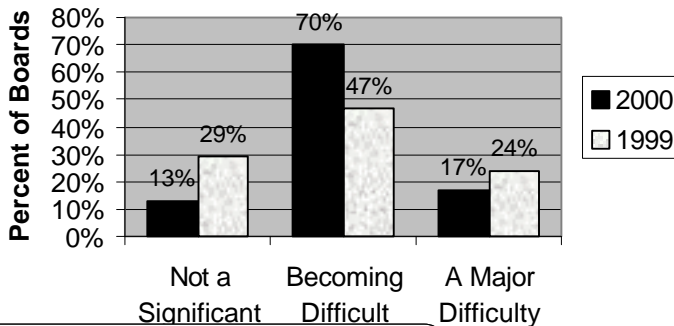


Fig. 13 Adult Credit Teaching Staff Availability



over 1999.

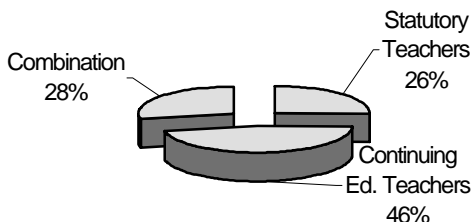
The vast majority (87%) of responding boards indicated that finding adult credit teaching staff was either becoming difficult or was already a major difficulty.

This was an increase of 16 percent over

1999.

Teachers paid on a "continuing ed." basis constituted almost half (46%) of adult day school credit teachers.

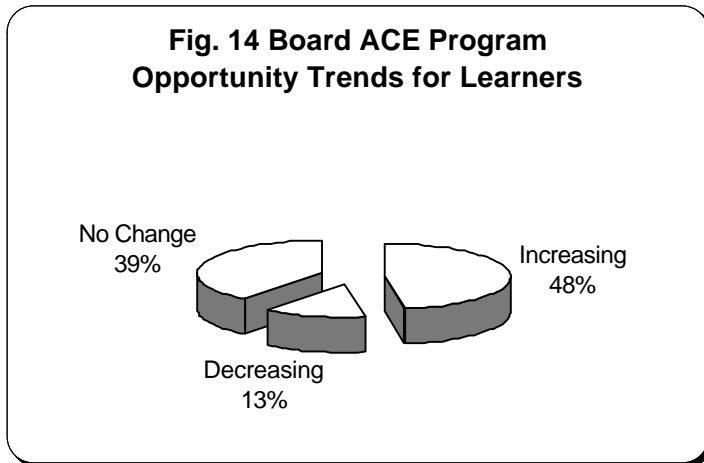
Fig. 14 Adult Day Credit Teacher Use



Eighty percent of boards responded that their ACE structure includes administrators (Principal, Vice-principal or equivalent) who are paid on a ten-month basis. Slightly over half of these (51percent) receive a summer allowance for supervision of summer programs. For these, one-third receive a per program allowance with the remainder being paid on a variety of other bases.

2.13 Trends and Issues

2.13.1 Program Opportunities for Learners

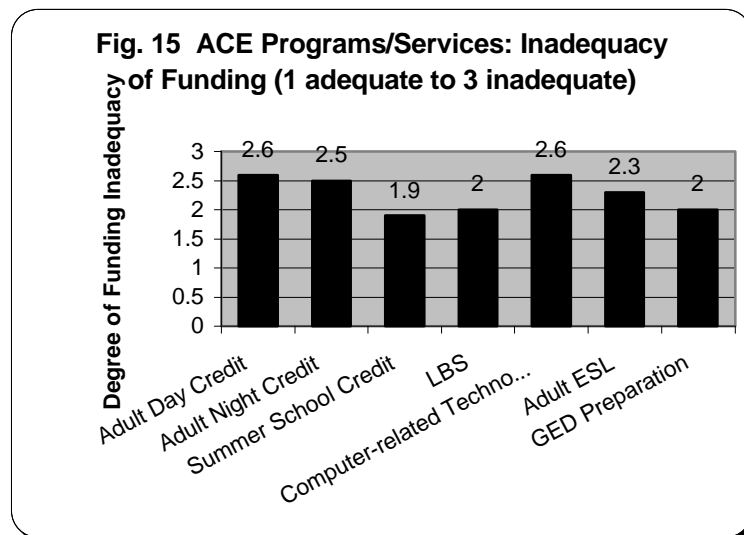


Eighty-seven percent of responding boards reported that currently there is no change or that there is an increase in ACE program access for learners. This compares to 71 percent in 1999. Only thirteen percent of boards indicated that program opportunities are decreasing (compared to 29 percent in 1999)

Thirty-four of thirty-nine boards (87 percent) reported that they had no programs targeted for closure, either actually or potentially. Several boards, however, reported serious imminent concerns regarding available funding and the potential closure of programs and facilities.

2.13.2 ACE Programs and Services: Adequacy of Funding

Responding boards deemed funding inadequacy to be the greatest for adult day credit programs and for computer-related technology. However, funding levels for adult night credit and adult ESL also represented a real concern for boards.



2.13.3 Revised Prior Learning Assessment (PLAR) Requirements: Anticipated Impact on Adult Credit Enrolment

The twenty-one boards responding to this issue reported that, on average, the revised PLAR requirements would have a serious impact (2.8 out of 3) on adult credit enrolment

2.13.4 Other Urgent Issues

Again in 2000, over two-thirds of board responses dealing with other urgent issues involved funding-related concerns. For a complete listing of urgent issues submitted by boards, see Appendix D.

3. Observations

The following observations are offered based on the foregoing:

- This year's survey response rate of 78.9 percent reflects a *drop of almost 20 percent* from 1999's 97.1 percent. While this drop makes absolute comparisons with last year's results less legitimate, certain patterns have nevertheless become apparent and are noted below. The explanation for the lower response rate includes issues of both methodology and ACE administrator workload. Because of the more extensive scope of the 1999 survey, and the need to have certain reference data from each board, the survey last year involved more comprehensive follow-up than in 2000. Despite this year's more limited follow-up, the vast majority of ACE administrators recognized the importance of the task and took increasingly scarce time to complete at least portions of the survey.
- There is *one less board offering ACE programming in 2000*. However, as mentioned previously, there are two sets of coterminous boards offering joint ACE programming.
- *There continues to be significant funding pressure on ACE facilities in school boards operating programs in former day school buildings and in leased facilities*. Funding to school boards mitigates against the continued ACE use of former day school buildings even with changes in grants to offset daytime adult program costs. In particular, where leasing is the only available option, existing funding levels are placing Ministry-funded programs in some boards at risk.
- It appears that ACE administrators are *not being provided with enough information and financial incentive* to consider providing after school literacy and numeracy programs for students and parents.
- Where boards are turning to more fee-based program provision, there *appears to be less concern about more traditional ACE program funding*. Unfortunately, considerations of geography, workload, and knowledge/awareness often mitigate against this option.
- The fact that *only one Ontario English public board* (as compared to 31 percent of English Catholic boards and 42 percent of all French boards) *does not offer ACE programs* generally reflects a longer history of involvement in "Con. Ed." programming, as well as less susceptibility to program cancellation.
- *Funding is again the most referred-to issue by CESBA administrators*. The reduction in day school funding in 1995 and changes in funding to school boards continue to place considerable pressure on school board ACE programs to become more cost effective. In fact, it appears that, *where school boards were once willing to underwrite the less visible non-instructional costs of ACE programming, board freedom to do so has been curtailed by envelope funding and other funding pressures*. Ninety-eight percent of school boards with ACE programming now offer these programs with a cost recovery expectation. The fact that so few boards are facing ACE program and facility cutbacks and the fact that learner access is actually increasing in many boards are testaments to the resilience and creativity with which ACE administrators confront funding challenges.

- *Relatively high reliance by many boards on Ministry funding (82 percent on average) continues to make ACE programming highly susceptible to changes in Ministry (and board) policy.* Those boards that have actively sought alternative funding partners and sources appear to have been less impacted by funding reductions
- While ACE incorporation does not appear to be a viable alternative for smaller boards, the fact that four boards are considering incorporation and the freedom from funding decision-making constraints that this implies, indicates that *ACE administrators are seeking alternative means of providing stabilization of programs and funding.*
- *Issues relating to amalgamation of school boards* that loomed so large in the past several years, *appear to have subsided in their relative importance.* Some larger northern and eastern boards, however, still face significant logistical issues having to do with program supervision and monitoring and with program viability due to the dispersed nature of their populations.
- Certain school board *ACE programs with strong community links* (i.e. ESL, LINC, LBS, International Languages) have been *able to keep costs down by using community-provided facilities.*
- Marketing strategies (such as *word of mouth* and the *use of brochures*) that are deemed to be most effective are also the ones that are used most extensively by school board ACE programs.
- *General interest fees appear to have risen sharply from 1999* indicating a greater emphasis on cost recovery expectations.
- Boards are continuing to reach out to meet the educational, upgrading and skill needs of adult learners with *over half of boards offering ACE programs in off-site locations.*
- ACE departments continue to demonstrate both their flexibility and expertise and consequently, their value to their boards in that *forty-five percent of responding school boards offered special alternative programs for adolescents,* with one-third of these identified as “behavioural” in nature.
- With a significant *increase in classroom group computer instruction and a relative decrease in on-line and individual self-paced instruction* there appears to be a greater focus on the maximizing of teacher resources.
- Because of the greater availability of employment in 2000, *fewer younger learners were enrolled in adult day credit programs.*
- With increases in numbers in the Ontario Works program and decreases in other forms of income support, it appears that *the government’s stated aim of reducing the numbers of persons on income support is being met.*
- The *increase in staff wages in all categories* probably reflects both an attempt to address pent up demand for raises and diminishing teacher/supervisor availability.
- *Credit teacher shortage has become a major issue* with almost ninety percent of boards indicating it as a problem. With the widespread use of hourly rated staff in adult day schools, *increasing numbers of these staff will likely be attracted to adolescent schools* where remuneration is generally much greater. This loss of adult teaching expertise is likely to have an increasingly negative impact on a particularly vulnerable population. In addition, retired teachers wishing to teach in adult programs continue to be limited by superannuation rules.
- With over half of adult day credit learners identified as receiving income support, with a majority being female and with the largest numbers of these learners in the age group 21 to 29, *school boards*

are continuing to provide critical academic upgrading and self improvement opportunities for those most susceptible to long-term poverty and its accompanying social impediments.

- While the number of new registrants in adult day credit programs having more than 24 credits has increased over 1999, *almost half will require more than two years to obtain their diplomas* if prior learning assessment opportunities become significantly more restrictive. Not only will this act as a disincentive both for registration and for program completion, but it will increase the taxpayer cost per learner.
- Despite both logistical and funding pressures on boards and ACE programs in the past few years, *program opportunities for adult learners have been described as remaining the same or increasing for a large majority of boards.* This seems to demonstrate both the resilience, creativity and commitment of our ACE administrators and staff and the continuing belief by school boards in the value of meeting the needs of the adult learners in their communities.
- *There is considerable concern regarding the implementation of Secondary Reform* and what this means for adult credit programs and the adult learners upon whom they impact.

4. Recommendations

It is recommended that:

- 4.1 In light of the continuing emphasis being placed on accountability, CESBA be encouraged to provide for boards a framework for the regular collection of data which tracks adult day school graduates. This data would be compiled and made available along with other CESBA survey data.
- 4.2 In considering the increase in adult day credit staffing shortages, school board ACE departments be encouraged by CESBA to investigate the implementation of adult day school credit programs using salaried (Form I) staff, and that CESBA continue in its work with the appropriate agencies in order to adjust the restrictions on longer teaching assignments for retired OTC staff.
- 4.3 A survey of school board ACE programs continue to be undertaken on a regular basis and that CESBA and MTCU continue to sponsor this survey as a joint effort. Boards need to be provided with data previously collected from their boards in order to facilitate the completion of survey questionnaires.
- 4.4 MTCU and The Ministry of Education (EDU) continue to work with CESBA in arriving at adequate funding levels for ACE upgrading programs. In order to stabilize program funding and availability, consideration should be given to the mandating of adult upgrading programs such as adult credit, adult ESL and LBS. Funding based on registration rather than attendance should be considered in order to offset the negative financial impact resulting from higher program drop-out rates in at-risk populations.
- 4.5 School boards continue to be encouraged to more actively seek program partnerships, especially in the areas of facility sharing and funding.
- 4.6 Both education ministries recognize geography, degree of urbanization, board size and need for day-time program facility leasing as factors in determining ACE funding for Ontario school boards.

- 4.7 CESBA and the education ministries continue to work together in determining appropriate funding levels for “wrap-around” services such as childcare and transportation for adult upgrading programs.
- 4.8 CESBA continue to work closely with both MTCU and Ministry of Education (EDU) so that the interests of adults in credit programs are considered in the implementation of Secondary Reform. (i.e. Any new guideline should take into account the guideline requirements that were in effect when the learner started back to school as an adult.)
- 4.9 CESBA work closely with both ministries in securing sufficient funding and in providing appropriate information so that *after school literacy and numeracy programs* are more widely offered.
- 4.10 CESBA place a greater emphasis on assisting its members in understanding both the importance of and pertinent strategies in effectively marketing ACE programs using *word-of-mouth*.
- 4.11 The needs of French school board ACE programs in Ontario be better ascertained and addressed.
- 4.12 With increasing workloads for ACE administrators, Ministry funding for ACE programs include a supervision component in order to provide more supervision and increase effectiveness.
- 4.13 CESBA continue in its work with the Independent Learning Commission (ILC) in the timely provision of materials for the new curriculum.
- 4.14 Further study of the data collected in this survey be considered.

5 Acknowledgements

Thanks to the CESBA membership for its suggestions of topics to be included in this study and to MTCU for the funding support that made this survey possible. Thanks, too, to the ACE administrators who appreciated the value of this exercise and made significant sacrifices in responding to the survey questionnaire.

Particular thanks go to the CESBA Board members listed below for their input and guidance at the various stages of this project.

Tony da Silva (President)
 Geraldine Waud (Past President)
 Murray McDonald (Vice-President)
 Ward Levine (Treasurer)

Diane Cowden (Secretary)
 Barb Krukowski (Executive Officer)
 Anna Bowles (Executive Officer)
 Dave Neumann (CESBA Executive Director)

6 Appendices

Appendix A: School Board ACE Contacts

School Boards	Name	Title	Phone	Fax	E-Mail
Algoma D.S.B.	Brian Wilson	Administrator Cont. Ed.	(705) 945-7214	(705) 945-7195	wilsonb@adsb.on.ca
Algonquin and Lakeshore Cath. D.S.B.	Bernadette Dececchi	Principal	(613) 544-3361	(613) 547-0999	dececchi@alcdsb.on.ca
Avon Maitland D.S.B.	Susan McKee	Coordinator of Lifelong Learning Programs	(519) 527-0111	(519) 527-0444	Susan_Mckee@fcmail.avonmaitland.on.ca
Bluewater D.S.B.	Susan Geisel	Executive Assistant	(519) 363-2014	(519) 363-3448	susan_geisel@bwdsb.on.ca
Brant-Haldimand-Norfolk Cath.D.S.B.	John Caruana	Superintendent	(519) 756-6505	(519) 756-9913	jcaruana@bhncdsb.edu.on.ca
Bruce-Grey Cath. D.S.B.	Rosemary Kennedy	Director	(519) 364-5820	(519) 364-5882	
Catholic D.S.B. of Eastern Ontario	Murray Marcino	Principal	(613) 930-9928	(613) 932-2887	lifelong@cnwl.igs.net
Con.des Ecoles Pub.d.l'est d.l'Ont	Lucie Cayouette	Administrator	(613) 731-7212	(613) 731-8730	lucie.cayouette@cepeo.on.ca
C.d.d.du Centre Sud-Ouest	Ronald Marion	President	(416) 391-1402	(416) 397-2047	
C.Scol.cath.d.d.ds Grandes Rivieres	Lucie Lambert	Coordonnatrice	(705) 267-1421	(705) 360-1870	lambertl@csdrg.on.ca
C.Scol. d.d.du Grand Nord de l'Ont.	Marc Dionne	Director	(705) 671-1533	(705) 671-1720	
C.Scol.d.d.du Nord-Est de l'Ontario	Dennis Yapps	Director	(705) 472-3443	(705) 472-5757	
C.Scol.d.d.cath.de l'Est Ontarien	Linda Mainville	Directrice adjointe	(613) 632-0144	(613) 632-0147	linda.mainville@sympatico.ca
C.Scol.d.d.cath.des Aurores boreales	J. Thiboutot-Debnam	Directrice	(807) 344-2266	(807) 344-3734	
C.Scol.d.d.cath. Centre-Sud	Madeleine Champagne	Directrice	(416) 397-6564	(416) 397-6576	
C.Scol.d.d.cath.des ec.cath.d.Sud-Ouest.	Joseph Gratton	Principal	(519) 735-4115	(519) 735-5577	
C.Scol.d.d.cath.du Centre-Est de l'Ont.	Serge Plouffe	Principal	(613) 741-2304	(613) 741-2191	
C.Scol.d.d.cath.du Nouvel-Ontario	Suzanne Bisailon	Coordinator	(705) 525-0110	(705) 525-4013	bisails@nouvelon.edu.on.ca
C.Scol.d.d.cath.Franco-Nord D.S.B. of Niagara	Fernand Crepeau	Superintendent	(705) 472-1702	(705) 472-9398	crepeauf@franco-nord.edu.on.ca
	Robert Tropea	Administrator, Community Education Service	(905) 687-7000	(905) 685-8511	bob.tropea@dsbn.edu.on.ca
D.S.B.Ont.North East	Christy Ciotti	Coordinator	(705) 264-6959	(705) 268-3055	cciotti@tbe.edu.com
Dufferin-Peel Cath. D.S.B.	Jerry Kelly	Principal	(905) 569-0665	(905) 569-8074	jerry.kelly@dpcdsb.org
Durham Catholic D.S.B.	Brian Hughes	Principal	(905) 438-0570	(905) 438-0571	principal@sympatico.ca
Durham D.S.B.	Ken De'Ath	Co-ordinator	(905) 440-4503	(905) 436-1780	De'Ath_Ken@durham.edu.on.ca
Grand Erie D.S.B.	Betty Anne Jackson	Principal	(519) 753-6079	(519) 753-6690	jacksoe@gedsb.net
Greater Essex County D.S.B.	Jon Elcombe	Principal	(519) 253-5006	(519) 253-0053	Jon_Elcombe@gecdsb.on.ca
Halton Cath. D.S.B.	Joe Mongiardi	Principal	(905) 849-7555	(905) 849-9937	mongiardij@haltonre.edu.on.ca
Halton D.S.B.	Bryn Davies	Principal	(905) 335-3665	(905) 332-1891	daviesb@haltontsb.on.ca
Hamilton-Wentworth Cath. D.S.B.	Jack Maga	Principal	(905) 577-0555	(905) 577-4728	magaj@ms.hwcdsb.edu.on.ca
Hamilton-Wentworth D.S.B.	David McIsaac	Principal	(905) 561-2190	(905) 561-2582	dmcisaac@hwdsb.on.ca

School Boards	Name	Title	Phone	Fax	E-Mail
Hastings and Prince Edward D.S.B.	Margaret Elliott	Coordinator Adult and Continuing Education	(613) 962-3133	(613) 962-0391	adult.education@hpedsb.on.ca
Huron-Superior Cath. D.S.B.	Mario Scornaiencki	Coordinator of Cont. and Cooperative Ed.	(705) 945-5656	(705) 945-5589	m_scornaiencki@hscdsb.on.ca
Kawartha Pine Ridge D.S.B.	Vito Barbuto	Principal	(705) 748-3800	(705) 743-8971	vito_barbuto@kpr.edu.on.ca
Keewatin-Patricia D.S.B.	Geoff McClain	Coordinator Adult Education and Training	(807) 727-3267	(807) 727-3574	geoff.mcclain@rl.kpdsb.on.ca
Kenora Cath.D.S.B.	Christine Wayne	Administrative Secretary	(807) 468-9851	(807) 468-8094	lyaguchi@voyageur.ca
Lakehead D.S.B.	Linda DePiero	Manager	(807) 623-2201	(807) 625-9268	ldepiero@lhbe.edu.on.ca
Lambton Kent D.S.B.	Darlene Ceci-Laws	Coordinator	(519) 383-8787	(519) 933-6855	cecid@lcbe.edu.on.ca
Limestone D.S.B.	Dale Midwood	Principal	(613) 546-5575	(613) 546-0177	midwoodd@limestone.edu.on.ca
London Dist.Catholic S.B.	Wilma deRond	Principal	(519) 659-1224	(519) 659-2282	wderond@ldcsb.on.ca
Near North D.S.B.	Tom Fletcher	Administrative Principal	(705) 497-0730	(705) 497-7945	fletchert@nearnorth.edu.on.ca
Niagara Cath. D.S.B.	Geraldine Waud	Principal	(905) 682-8051	(905) 682-1219	geraldine.waud@ncdsb.com
Nipissing-Parry Sound Cath. D.S.B.	Mary Kolz	Vice-Principal	(705) 472-7771	(705) 472-9081	kolzm@npsc.edu.on.ca
Northeastern Cath.D.S.B.	Bill Parent	Director	(705) 268-7443	(705) 267-3590	
Northwest Cath. D.S.B.	Carol'lyne Oldale	Director	(807) 274-2931	(807) 274-8792	cloldale@admin.tncdsb.on.ca
Ottawa-Carleton Cath. D.S.B.	Tom D'Amico	Principal	(613) 224-6295	(613) 723-7510	thomas_D'Amico@ocdsb.on.ca
Ottawa-Carleton D.S.B.	Anna Bowles	Principal	(613) 2392281	(613) 239-2324	anna_bowles@ocdsb.edu.on.ca
Peel D.S.B.	Tony da Silva	Director, Community Ed.	(905) 949-0049	(905) 949-6636	tdasilva@clda.on.ca
Peterb. Vict. North.& Clar. Cath.D.S.B.	Donald Folz	Director of Education	(705) 748-4861	(705) 748-2791	
Rainbow.D.S.B.	Bryan Slywchuk	Principal	(705) 674-7551	(705) 674-5383	slywchb@rainbow.edu.on.ca
Rainy River D.S.B.	Gord McCabe	Coordinator Alternative Education	(807) 274-7150	(807) 274-4265	gmccabe@rrdsb.com
Renfrew County Cath. D.S.B.	Birgit Corriveau	ABLN Program Resource	(613) 735-1031	(613) 732-1686	bcorriveau@rccdsb.edu.on.ca
Renfrew County D.S.B.	Barkley Hawkins	Supervisor, Continuing and Community Education	(613) 735-0151	(613) 735-3219	hawkinsb@renfrew.edu.on.ca
St.Clair Cath. D.S.B.	Henry Kulik	Superintendent	(519) 336-6139	(519) 336-5160	kulikhe@st-clair.net
Simcoe County D.S.B.	Diane Cowden	Principal	(705) 734-6363	(705) 726-4886	dcowden@scdsb.on.ca
Simcoe Muskoka Cath.D.S.B.	Peter Phelan	Manager	(705) 725-8990	(705) 725-9511	
Sudbury Cath.D.S.B.	Connie Morrison	Co-ordinator	(705) 673-3031	(705) 673-3815	secr_204@scdsb.edu.on.ca
Superior-Greenstone D.S.B.	Patti Pella	Superintendent	(807) 887-3922	(807) 228-1471	
Superior North Cath.D.S.B.	Barb Spadoni	Principal	(807) 825-3255	(807) 825-9601	
Thames Valley D.S.B.	Doug Fairbairn	Principal	(519) 452-2675	(519) 433-3825	d.fairbairn@tvdsb.on.ca
Thunder Bay Cath.D.S.B.	Devona Crowe	Principal of Programs and Services	(807) 625-1555	(807) 625-1560	dcrowe@tbcdsb.on.ca
Toronto Cath. D.S.B.	Hanna Cabaj	Senior Manager, Continuing Ed.	(416) 222-8282	(416) 512-4992	hanna.cabaj@tcdsb.org
Toronto D.S.B.	Domenic DiFelice	Superintendent	(416) 397-3784	(416) 395-4001	domenic.difelice@tdsb.on.ca
Trillium Lakelands D.S.B.	Ward Levine	Vice-Principal	(705) 324-5280	(705) 324-9773	ward.levine@tldsb.on.ca
Upper Canada D.S.B.	Brenda King	Principal	(613) 937-0120	(613) 931-7251	kingb@ucdsb.on.ca
Upper Grand D.S.B.*See Well.Ca.D.S.B.	Murray Shannon	Principal	(519) 836-7281	(519) 837-0244	mshannon@conted.ugdsb.on.ca
Waterloo Cath. D.S.B.	Tom Forestell	Principal	(519) 651-2020	(519) 651-1987	tom.forestell@wcdsb.edu.on.ca

School Boards	Name	Title	Phone	Fax	E-Mail
Waterloo Region D.S.B.	Ken Lepard	Principal	(519) 570-0300	519) 742-1364	K_Lepard@ad.wrdsb.edu.on.ca
Wellington Cath.D.S.B. (See Upp.Gr.DSB)					
Windsor-Essex Cath.D.S.B.	Bob Gilbert	Principal	(519) 972-2727	(519) 966-8738	bob_gilbert@wecdsb.on.ca
York Cath.D.S.B.	Cosimo Modafferi	Principal	(416) 221-5051	(905) 841-6940	modaffc@ycdsb.edu.on.ca
York Region D.S.B.	Bryan Kettlewell	Principal	(905) 884-2046	(905)884-3604	bryan.kettlewell@yrdsb.edu.on.ca

Appendix B: ACE Program Offerings by Board

School Boards	Adult Co-op (Credit ESL)	Adolescent Alternative Programs	Adult Apprenticeship Preparation	Adult Co-op (Credit Non-ESL)	Adult Co-op (Non-credit)	Adult Day Credit Classroom	Adult Day General Interest	Adult ESL (Credit)	Adult ESL (Non-Credit)	Adult Mentoring	Adult Work Experience	Citizenship	Correspondence/Self Study	Driver Education (In-car)	Driver Education (In-class)	G.E.D. Preparation	International Languages (Credit)	International Languages (Elem.)	LINC
Algoma D.S.B.		1				1	1	1					1						
Algonquin and Lakeshore Cath. D.S.B.	1	1		1		1	1	1					1	1	1	1	1	1	1
Avon Maitland D.S.B.		1		1	1	1	1	1					1					1	1
Bluewater D.S.B.								1						1	1			1	1
Brant/Haldimand-Norfolk Cath.D.S.B.		1				1	1							1	1		1	1	
Bruce-Grey Cath. D.S.B.																			
Catholic D.S.B. of Eastern Ontario																			
Con.des Ecoles Pub.d.l'est d.l'Ont (#59)		1		1		1		1					1						
C.d.d.du Centre Sud-Ouest																			
C.Scol.cath.d.d.ds Grandes Rivieres																			
C.Scol. d.d.du Grand Nord de l'Ont.																			
C.Scol.d.d.du Nord-Est de l'Ontario																			
C.Scol.d.d.cath.de l'Est Ontarien		1		1		1							1						
C.Scol.d.d.cath.des Aurores boreales																			
C.Scol.d.d.cath. Centre-Sud																			
C.Scol.d.d.cath.des ec.cath.du Sud.Ouest.								1	1								1		
C.Scol.d.d.cath.du Centre-Est de l'Ont.																			
C.Scol.d.d.cath.du Nouvel-Ontario																			
C.Scol.d.d.cath.Franco-Nord																			
D.S.B. of Niagara		1		1		1		1				1	1				1	1	
D.S.B.Ont.North East						1						1	1	1	1			1	
Dufferin-Peel Cath. D.S.B.	1	1	1	1		1		1				1	1	1	1		1	1	1
Durham Catholic D.S.B.																			
Durham D.S.B.	1			1		1		1	1		1		1			1	1	1	1
Grand Erie D.S.B.		1				1		1					1			1		1	1
Greater Essex County D.S.B.																			
Halton Cath. D.S.B.				1		1	1	1				1	1	1	1		1	1	1
Halton D.S.B.		1				1		1				1	1				1	1	
Hamilton-Wentworth Cath. D.S.B.		1	1	1	1	1	1	1		1		1	1	1	1	1	1	1	1
Hamilton-Wentworth D.S.B.		1				1	1	1				1	1	1	1		1	1	1
Hastings and Prince Edward D.S.B.		1	1										1	1	1	1		1	
Huron Perth Cath. D.S.B.																			
Kawartha Pine Ridge D.S.B.		1		1		1		1					1				1	1	
Keewatin-Patricia D.S.B.		1		1	1	1	1	1			1		1	1	1				

School Boards

	Adult Co-op (Credit ESL)	Adolescent Alternative Programs	Apprenticeship Preparation	Adult Co-op (Credit Non-ESL)	Adult Co-op (Non- credit)	Adult Day Credit Classroom	Adult Day General Interest	Adult ESL (Credit)	Adult ESL (Non- Credit)	Adult Mentoring	Adult Work Experience	Citizenship	Correspondence/Se If Study	Driver Education (In-car)	Driver Education (In-class)	G.E.D. Preparation	International Languages (Credit)	International Languages (Elem.)	LINC
Lakehead D.S.B.		1							1				1				1	1	1
Lambton Kent D.S.B.																			
Limestone D.S.B.				1		1	1		1			1	1					1	
London Dist.Catholic S.B.				1		1			1				1		1		1	1	1
Niagara Cath. D.S.B.		1		1		1	1		1			1		1	1			1	1
Nipissing-Parry Sound Cath. D.S.B.						1							1						
Northeastern Cath.D.S.B.																			
Northwest Cath. D.S.B.																			
Ottawa-Carleton Cath. D.S.B.	1			1		1	1	1	1			1	1	1	1		1	1	1
Ottawa-Carleton D.S.B.				1			1	1	1							1	1	1	1
Peel D.S.B.						1			1	1		1		1	1	1	1	1	1
Peterb. Vict. North. & Clar. Cath.D.S.B.																			
Rainbow.D.S.B.						1											1	1	
Rainy River D.S.B.																			
Renfrew County Cath. D.S.B.		1																1	
Renfrew County D.S.B.						1			1				1						
St.Clair Cath. D.S.B.																			
Simcoe County D.S.B.				1		1	1		1				1	1	1	1		1	
Simcoe Muskoka Cath.D.S.B.																			
Sudbury Cath.D.S.B.		1				1			1				1					1	
Superior-Greenstone D.S.B.																			
Superior North Cath.D.S.B.																			
Thames Valley D.S.B.				1		1	1		1			1	1	1	1		1	1	1
Thunder Bay Cath.D.S.B.																			
Toronto Cath. D.S.B.						1			1			1		1	1		1	1	1
Toronto D.S.B.																			
Trillium Lakelands D.S.B.		1		1		1							1						
Upper Canada D.S.B.																			
Upper Grand D.S.B.																			
Waterloo Cath. D.S.B.	1			1		1	1	1	1			1	1				1	1	1
Wellington Cath.D.S.B.																			
Windsor-Essex Cath.D.S.B.		1		1		1		1			1		1		1		1	1	
York Cath.D.S.B.		1							1			1					1	1	1
York Region D.S.B.				1		1		1	1			1		1	1	1	1	1	1

School Boards

	Literacy and Basic Skills (LBS)	Night School Credit	Night School General Interest	OYAP	Summer School Gen. Int. ('00)	Summer School make-up Credit	Summer School New Credit ('00)	Summer School Remedial ('00)	HRDC-Funded		
									Career Dec. Making	Skill Enhanceme	Job Search
Algoma D.S.B.	1	1	1			1	1	1			
Algonquin and Lakeshore Cath. D.S.B.	1	1			1	1	1	1			
Avon Maitland D.S.B.	1	1	1						1		
Bluewater D.S.B.		1	1	1		1	1	1	1		
Brant/Haldimand-Norfolk Cath.D.S.B.		1		1		1	1	1			
Bruce-Grey Cath. D.S.B.											
Catholic D.S.B. of Eastern Ontario											
Con.des Ecoles Pub.d.l'est d.'Ont (#59)	1		1	1		1	1	1			
C.d.d.du Centre Sud-Ouest											
C.Scol.cath.d.d.ds Grandes Rivieres											
C.Scol. d.d.du Grand Nord de l'Ont.											
C.Scol.d.d.du Nord-Est de l'Ontario											
C.Scol.d.d.cath.de l'Est Ontarien			1								
C.Scol.d.d.cath.des Aurores boreales											
C.Scol.d.d.cath. Centre-Sud											
C.Scol.d.d.cath.des ec.cath.du Sud.Ouest.		1									
C.Scol.d.d.cath.du Centre-Est de l'Ont.											
C.Scol.d.d.cath.du Nouvel-Ontario	1										
C.Scol.d.d.cath.Franco-Nord											
D.S.B. of Niagara	1	1	1		1		1	1	1		
D.S.B.Ont.North East	1			1		1	1	1			
Dufferin-Peel Cath. D.S.B.		1	1		1	1	1	1			
Durham Catholic D.S.B.											
Durham D.S.B.	1	1	1			1	1	1			
Grand Erie D.S.B.	1	1	1			1		1	1	1	1
Greater Essex County D.S.B.											
Halton Cath. D.S.B.	1	1	1		1	1	1	1			
Halton D.S.B.		1			1	1	1				
Hamilton-Wentworth Cath. D.S.B.	1	1	1	1	1	1	1	1	1	1	1
Hamilton-Wentworth D.S.B.	1	1	1	1	1	1	1	1	1		
Hastings and Prince Edward D.S.B.		1		1	1	1	1	1		1	
Huron Perth Cath. D.S.B.											
Kawartha Pine Ridge D.S.B.	1					1	1	1			
Keewatin-Patricia D.S.B.	1	1	1	1	1	1	1	1	1	1	1

School Boards

School Boards	Literacy and Basic Skills (LBS)	Night School Credit	Night School General Interest	OYAP	Summer School Gen. Int. ('00)	Summer School make-up Credit ('00)	Summer School New Credit ('00)	Summer School Remedial ('00)	HRDC-Funded		
									Career Dec. Making i.e.	Skill Enhanceme	Job Search
Lakehead D.S.B.	1	1									
Lambton Kent D.S.B.											
Limestone D.S.B.	1		1	1		1	1	1	1		
London Dist.Catholic S.B.	1	1				1	1	1			1
Niagara Cath. D.S.B.	1	1	1		1	1	1	1			
Nipissing-Parry Sound Cath. D.S.B.	1					1		1			
Northeastern Cath.D.S.B.											
Northwest Cath. D.S.B.											
Ottawa-Carleton Cath. D.S.B.	1	1	1		1	1	1	1			
Ottawa-Carleton D.S.B.	1	1	1			1	1	1			
Peel D.S.B.	1	1	1			1	1	1	1	1	1
Peterb. Vict. North. & Clar. Cath.D.S.B.											
Rainbow.D.S.B.		1	1								
Rainy River D.S.B.											
Renfrew County Cath. D.S.B.	1					1		1			
Renfrew County D.S.B.	1								1		
St.Clair Cath. D.S.B.											
Simcoe County D.S.B.	1	1	1	1	1	1	1	1	1	1	1
Simcoe Muskoka Cath.D.S.B.											
Sudbury Cath.D.S.B.	1	1	1			1	1	1			
Superior-Greenstone D.S.B.											
Superior North Cath.D.S.B.											
Thames Valley D.S.B.	1	1	1			1	1	1			
Thunder Bay Cath.D.S.B.											
Toronto Cath. D.S.B.		1	1			1	1	1			
Toronto D.S.B.											
Trillium Lakelands D.S.B.	1	1		1		1	1	1			
Upper Canada D.S.B.											
Upper Grand D.S.B.											
Waterloo Cath. D.S.B.	1	1				1		1			
Wellington Cath.D.S.B.											
Windsor-Essex Cath.D.S.B.		1				1		1			
York Cath.D.S.B.		1				1	1	1			
York Region D.S.B.	1	1	1	1		1	1	1			

Appendix C: School Board ACE Contacts

School Boards	Name	Phone	Fax	E-Mail	Programs
Algoma D.S.B.	Brian Wilson	(705) 945-7185	(705) 945-7195	wilsonb@adsb.on.ca	All
Algonquin and Lakeshore Cath. D.S.B.	Bernadette Dececchi	(613) 544-3361	(613) 547-0999	dececchi@alcdsb.on.ca	All
Avon Maitland D.S.B.	Susan Mckee	(519) 527-0111	(519) 527-0444	Susan_Mckee@fcmail.avonmaitland.on.ca	All but SCR,SEL,ALT
	Bill Gerth	(519) 527-0111	(519) 527-0222	William_Gerth@fcmail.avonmaitland.on.ca	SCR,SEL,ALT
Bluewater D.S.B.	Susan Geisel	(519) 363-2014	(519) 363-3448	susan_geisel@bwdsb.on.ca	All
Brant/Haldimand-Norfolk Cath.D.S.B.	Jossey Padamadan	(519) 759-1129	(519) 751-0526	jpadamadan@bhncdsb.edu.on.ca	NCR,SCR,SEL,ESL
	J. Burroughs	(519) 759-2318	(519) 751-0526	jburroughs@bhncdsb.edu.on.ca	ALT
Bruce-Grey Cath. D.S.B.					
Catholic D.S.B. of Eastern Ontario					
Con.des Ecoles Pub.d.l'est d.l'Ont (#59)	Lucie Cayouette	(613) 731-7212	(613) 731-8730	lucie.cayouette@cepeo.com	ADC,COR
	Chieu Lien Tan-Therrien	(613) 731-7212	(631) 731-8730	chhhiew.tan-therrien@cepeo.on.ca	FSL
	Jean-Marie Pitre	(613) 731-7212	(631) 731-8730	jean-marie_pitre@mediacentre.com	LBS
	Guylaine Ayotte	(613) 745-0369	(613) 745-0631	guylaine.ayotte@cepeo.on.ca	ALT
C.d.d.du Centre Sud-Ouest					
C.Scol.cath.d.d.ds Grandes Rivieres					
C.Scol. d.d.du Grand Nord de l'Ont.					
C.Scol.d.d.du Nord-Est de l'Ontario					
C.Scol.d.d.cath.de l'Est Ontarien	Linda Mainville	(613) 632-0144	(613) 632-0142	linda.mainville@sympatico.ca	All Programs
C.Scol.d.d.cath.des Aurores boreales					
C.Scol.d.d.cath. Centre-Sud					
C.Scol.d.d.cath.des ec.cath.du Sud-Ouest.	Joseph Gratton	(519) 735-4115	(519) 735-5577		NCR
C.Scol.d.d.cath.du Centre-Est de l'Ont.	Serge Plouffe	(613) 741-2304	(613) 741-2191		DCR,COR,NCR,SCR,
	Gerald Bigras	(613) 746-3865	(613) 746-3163		FSL,ILE
C.Scol.d.d.cath.du Nouvel-Ontario	Suzanne Bisailon	(705) 525-0110	(705) 525-4013	bisails@nouvelon.edu.on.ca	All Programs
C.Scol.d.d.cath.Franco-Nord	Daniel Duchesne	(705) 472-8240	(705) 472-8476		DCR
	Yvon Marleau	(705) 753-1510	(705) 753-5370		DCR
	Marcel Bougie	(705) 753-1510	(705) 753-5370		SCR,SEL
D.S.B. of Niagara	Bob Tropea	(905) 786-7000	(905) 685-8511	Bob.Tropea@dsbn.edu.on.ca	DCR,COR,NCR,SCR,SEL,ESL, ILE,ICR,ALT
	Shirley Henley	(905) 687-7000	(905) 685-8511	Shirley.Henley@dsbn.edu.on.ca	LBS
	Carol Maingot	(905) 786-7000	(905) 685-8511	Carol.Maingot@dsbn.edu.on.ca	DGI,NGI,ATR

School Boards	Name	Phone	Fax	E-Mail	Programs
D.S.B.Ont.North East	Christy Ciotti	(705) 264-6959	(705) 268-3055	cciotti@tbe.edu.com	DCR,COR,LBS,ALT
Dufferin-Peel Cath. D.S.B.	P. Bamford	(705) 285-3266	(705) 235-2071		SCR
	Jerry Kelly	(905) 569-0665	(905) 569-8074	jerry.kelly@dpcdsb.org	DCR,COR,ESL,LIN,ICR,ATR
	Debbie Borg	(905) 569-0665	(905) 569-8074	debbie.borg@dpcdsb.org	NGI,NCR,SCR,SEL,
	Joanne Menard	(905) 890-0708	(905) 501-1810	joanne.menard@dpcdsb.org	ILE
	Marilena Tesoro	(905) 890-0708	(905) 501-1810	marilena.tesoro@dpcdsb.org	ALT
Durham Catholic D.S.B.	Brian Hughes	(905) 388-0570	(905) 438-0571	principal@sympatico.ca	All
Durham D.S.B.	Ken De'Ath	(905) 440-4503	(905) 436-1780	De'Ath_Ken@durham.edu.on.ca	NGI,NCR,SCR,SEL,ILE,ICR
	Lex Stewart	(905) 440-4490	(905) 436-1780	stewart_lex@durham.ede.on.ca	DCR,GED
	Curtis Sahadath	(905) 440-4501	(905) 436-1780	sadahath_curtis@durham.edu.on.ca	COR
	Monica McClure	(905) 440-4480	(905) 436-1780	McClure_Monica@durham.edu.on.ca	ESL,LIN
	Darlene Woodward	(905) 440-4505	(905) 436-1780	Woodward_Darlene@durham.edu.on.ca	ATR
	Maureen Cook	(905) 440-4488	(905) 436-1780	cook_maureen@durham.edu.on.ca	PSW
	Karen Burwell	(905) 440-4507	(905) 436-1780	Burwell_Karen@durham.edu.on.ca	LBS
Grand Erie D.S.B.	Betty Anne Jackson	(519) 759-2658	(519) 753-6690	jacksoe@gedsb.net	COR,NGI,NCR,SCR,SEL,ESL
	Bev Brandenburg	(519) 326-1168	(519) 253-0053		ILE,ATR,ALT
	Margo Bruce	(519) 253-5006	(519) 253-0053		DGI
	Jim Fazackerley	(519) 925-3006	(519) 253-0053		ESL
	Harriet Stone	(519) 969-3250	(519) 253-0053		LBS
Greater Essex County D.S.B.	Jon Elcombe	(519) 253-5006	(519) 253-0053	Jon_Elcombe@gecdsb.on.ca	DCR,NCR,SCR,SEL
	Bev Brandenburg	(519) 326-1168	(519) 253-0053		DGI
	Margo Bruce	(519) 253-5006	(519) 253-0053		ESL
	Jim Fazackerley	(519) 925-3006	(519) 253-0053		LBS
	Harriet Stone	(519) 969-3250	(519) 253-0053		
Halton Cath. D.S.B.	Irene Visser	(905) 849-7555	(905) 849-9937	visseri@haltonrc.edu.on.ca	DCR
	Paula Desjardins	(905) 632-5858	(905) 632-6495	desjardinsp@haltonrc.edu.on.ca	COR
	Tony Piccoli	(905) 632-5858	(905) 632-6495		DGI,NGI
	Sandra Adda	(905) 849-7555	(905) 849-9937		ESL,LIN
	Helen O'Brien	(905) 632-5858	(905) 632-6495		LBS
	Paul Lau	(905) 632-5858	(905) 632-6495		ILE
	Orazio Caltagirone	(905) 632-5858	(905) 632-6495		ILE
Halton D.S.B.	Bryn Davies	(905) 335-3663	(905) 332-1891	daviesb@haltontsb.on.ca	DCR,SEL
	David Knight	(905) 632-2944	(905) 637-5390	knightd@haltontsb.on.ca	COR,NCR,ICR
	Dorothy Whitely	(905) 632-2944	(905) 637-5390	whitelyd@haltontsb.on.ca	ILE
	Brenda Deshane	(905) 632-2944	(905) 637-5390	deshane@haltontsb.on.ca	ALT

School Boards	Name	Phone	Fax	E-Mail	Programs
Hamilton-Wentworth Cath. D.S.B.	Jack Maga	(905) 577-0555	(905) 577-4728	magaj@ms.hwcdsb.edu.on.ca	SCR,SEL,LIN,LBS,ALT,GED
	Rocco Paone	(905) 575-5202	(905) 383-4436	paoner@ms.hwcdsb.edu.on.ca	DCR,COR,DGI,NGI,NCR,ATR
	Angela Rzazewski	(905) 573-0544	(905) 573-2259	rzazewskia@ms.hwcdsb.edu.on.ca	ILE,ICR
Hamilton-Wentworth D.S.B.	Dave McIsaac	(905) 561-2190	(905) 561-2582	dmcisaac@hwdsb.on.ca	All Programs
Hastings and Prince Edward D.S.B.	Margaret Elliott	(613) 962-3133	(613) 962-0391	adult.education@hpedsb.on.ca	COR,NCR,SCR,ATR,GED
	Susan Hall	(613) 962-9295	(613) 962-1047	shall@hpedsb.on.ca	SCR,SEL
	William Coombs	(613) 966-1170	(613) 966-6023	bcoombs@hpedsb.on.ca	ALT
Huron Perth Cath. D.S.B.					
Huron-Superior Cath. D.S.B.	Mario Scornaiencki	(705) 945-5656	(705) 945-5589	M_SCORNAIENCKI@hscdsb.on.ca	All Programs
Kawartha Pine Ridge D.S.B.	Vito Barbuto	(705) 748-3800	(705) 743-8971	vito_barbuto@kpr.edu.on.ca	DCR,SCR,SEL,ALT
	Cory Wink	(705) 749-0777	(705) 749-0084		ESL,LIN,LBS
	Cal Smith	(705) 748-3800	(705) 749-3450	cal_smith@kpr.edu.on.ca	COR,ICR
	Tracy Vandenberg	(705) 742-7277	(705) 749-3450		DGI,ATR
	Diane Wolf	(705) 742-2702	(705) 742-0321		ILE
Keewatin-Patricia D.S.B.	Geoff McClain	(807) 727-3267	(807) 727-3574	geoff.mcclain@rl.kpdsb.on.ca	All Programs
Kenora Cath.D.S.B.					
Lakehead D.S.B.	Linda Depiero	(807) 623-2201	(807) 625-9268	ldpiero@lhbe.edu.on.ca	COR,DGI,NGI,ESL,LIN,LBS,ILE,ATR
	Ian MacRae	(807) 577-4251			
Lambton Kent D.S.B.	Darlene Ceci-Laws	(519) 383-8787	(519) 332-6855	cecid@lcbe.edu.on.ca	
	Jean Doull	(519) 383-8787	(519) 332-6855		
	Tom Curtin				
Limestone D.S.B.	Dale Midwood	(613) 546-5575	(613) 546-0177	midwoodd@limestone.edu.on.ca	DCR,SCR,
	Kelly Roantree	(613) 542-7369	(613) 546-9545	roantreek@limestone.edu.on.ca	COR
	Erin Pincivero	(613) 546-5575	(613) 546-0177	pinciveroe@limestone.edu.on.ca	ESL
	Laurie Preston	(613) 542-7369	(613) 546-9545	prestonl@limestone.edu.on.ca	DGI,LBS,ATR
	Barb Riddell	(613) 542-7369	(613) 546-9545	riddellb@limestone.edu.on.ca	ILE
London Dist.Catholic S.B.	Wilma deRond	(519) 659-1224	(519) 659-2282	wderond@main.cfill.on.ca	SCR,SEL,ESL,LIN,ILE
	Jill Slemmon	(519) 659-1224	(519) 659-2282		DCR,LBS
	Jan Staples	(519) 659-1224	(519) 659-2282		COR,NCR,ICR
Near North D.S.B.	Bob Lyttle	(705) 386-2363	(705) 386-2880	lyttleb@nearnorth.edu.on.ca	DCR
Niagara Cath. D.S.B.	Tom Fletcher	(705) 497-0730	(705) 472-9927	fletcher@nearnorth.edu.on.ca	NCR,SCR,SEL
	Geraldine Waud	(905) 682-3360	(905) 682-1219	geraldine.waud@ncdsb.com	DCR,NCR,SCR,SEL,ILE,ICR
Nipissing-Parry Sound Cath. D.S.B.	Larry Dolan	(905) 682-3360	(905) 682-1219	larry.dolan@ncdsb.on.ca	DGI,NGI,ESL,LIN,LBS,ATR
	Mary Kolz	(705) 472-7771	(705) 472-9081	kolzm@npsc.edu.on.ca	All Programs
Northeastern Cath.D.S.B.					
Northwest Cath. D.S.B.					
Ottawa-Carleton Cath. D.S.B.	Tom Duggan	(613) 228-8884	(613) 723-7510	Thomas_Duggan@occdsb.on.ca	DCR, COR
	Shailja Verma	(613) 224-2288	(613) 723-7510	Shailja_Verma@occdsb.on.ca	NCR,SCR,SEL,ESL,LIN
	Maria Makrakis	(613) 224-0509	(613) 723-7510	Maria_Makrakis@occdsb.on.ca	DGI,NGI,LBS,ILE,ICR,ATR

School Boards	Name	Phone	Fax	E-Mail	Programs
Ottawa-Carleton D.S.B.	Caroline Akeson	(613) 239-2309	(613) 239-2679	caroline_akeson@ocdsb.edu.on.ca	DGI
	Susan Nutbrown	(613) 239-2509	(613) 239-2679	susan_nutbrown@ocdsb.edu.on.ca	NGI
	Constantine Ioannou	(613) 239-2539	(613) 239-2324	constantine_ioannou.ocdsb.edu.on.ca	NCR,SCR,SEL,ILE,ICR
Peel D.S.B.	Irene Blayney	(613) 239-2287	(613) 239-2324	irene_blayney@ocdsb.edu.on.ca	ESL,LIN,LBS,GED
	George Crawford	(905) 270-6000	(905) 279-9455		DCR
	Henry Vander Griendt	(905) 949-0049	(905) 949-6004	hvandergriendt@tcet.com	DGI,NGI,NCR,SCR,SEL
	Elspeth Hannan	(905) 949-0049	(905) 949-6004	ehannan@tcet.com	ILE,ICR
	Dalia Taylor	(905) 949-2338	(905) 949-6004	dtaylor@clta.on.ca	LBS
	Carol Culos	(905) 270-6000	(905) 279-9455		ESL
	Gerson Fonseca	(905) 270-6000	(905) 276-6797		LIN
Peterb. Vict. North. & Clar. Cath.D.S.B.					
Rainbow.D.S.B.	Bryan Slywchuk	(705) 674-7551	(705) 674-5383	slywchb@rainbow.edu.on.ca	All Programs
Rainy River D.S.B.	Gord McCabe	(807) 274-7150	(807) 274-4265	gmccabe@rrdsb.com	All Programs
Renfrew County Cath. D.S.B.	Michele Arbour	(613) 735-1031	(613) 735-2649	marbour@rccdsb.edu.on.ca	All Programs
Renfrew County D.S.B.	Barkley Hawkins	(613) 735-0151	(613) 735-3219	hawkinsb@renfrew.edu.on.ca	All Programs
St.Clair Cath. D.S.B.					
Simcoe County D.S.B.	Fraser Gagne	(705) 725-8360	(705) 725-8357	fgagne@scdsb.on.ca	DGI,ATR,GED,NGI
	Lynn Abbott-Lennox	(705) 325-9279		labott-lennox@scdsb.on.ca	DCR,NCR,ALT
	Diane Cowden	(705) 734-6363	(705) 726-4886	dcowden@scdsb.on.ca	COR,SCR,SEL,ILE
	Mary Anne Myers	(705) 526-8936	(705) 526-4905	mmyers@scdsb.on.ca	LBS
Simcoe Muskoka Cath.D.S.B.					
Sudbury Cath.D.S.B.	Connie Morrison	(705) 673-3031	(705) 673-3815	secr_204@scdsb.edu.on.ca	All Programs
Superior-Greenstone D.S.B.					
Superior North Cath.D.S.B.					
Thames Valley D.S.B.	Doug Fairbairn	(519) 452-2675	(519) 452-2689	d.fairbairn@tvdsb.on.ca	DCR,COR,NCR
	Karen Dutton	(519) 452-2661	(519) 452-2589		DGI,NGI,ATR
	Ron Olson	(519) 452-2677	(519) 452-2689	r.olson@tvdsb.on.ca	SCR,SEL,ILE,ICR
	Mary Singeris	(519) 452-2960	(519) 452-2689		ESL,LBS
	Tony Allard	(807) 344-8433		tallard@tbcdsb.on.ca	SCR,SEL
Thunder Bay Cath.D.S.B.	Celeste King	(807) 344-7961		cking@tbcdsb.on.ca	ESL
	Joe Czaczkowski	(807) 683-8941		jczac@tbcdsb.on.ca	ALT
	Ashleigh Molloy	(416) 222-8282	(416) 512-4922	ashleigh.molloy@tcdsb.org	NGI,NCR,SCR,SEL,ICR
Toronto Cath. D.S.B.	Hanna Cabaj	(416) 222-8282	(416) 512-4922	hanna.cabaj@tcdsb.org	ESL,LIN,LBS
	Adelino DaSilva	(416) 222-8282	(416) 512-4922	adelino.dasilva@tcdsb.org	ILE
Toronto D.S.B.	Judy Whitfield	(416) 394-2119	(416) 394-4137	judy.whitfield@tdsb.on.ca	DCR,NCR,ICR
	Gretchen Thomas	(416) 395-8081	(416) 395-8441	gretchen.thomas@tdsb.on.ca	DGI,NGI
	Barbara Toye	(416) 395-8430	(416) 395-4508	barbara.toye@tdsb.on.ca	ATR
	Dave Harrison	(416) 396-7986	(416) 396-7840	david.harrison@tdsb.on.ca	ESL,LIN,LBS
	Bryan Currah	(416) 397-3832	(416) 397-3835	bryan.currah@tdsb.on.ca	SEL,ILE
	Ward Levine	(705) 324-5280	(705) 324-9773	Ward.levine@tldsb.on.ca	All Programs
Trillium Lakelands D.S.B.					

School Boards	Name	Phone	Fax	E-Mail	Programs	
Upper Canada D.S.B.	Kevin Parkinson	(613) 937-0120	(613) 930-7251	parkinsonk@ucdsb.on.ca	DCR,COR,NGI,ILE	
	John Brady	(613) 937-0120	(613) 930-7251	bradyjo@ucdsb.on.ca	SCR,ALT	
	Jeanne Ward	(613) 937-0120	(613) 930-7251		ESL	
	Diane Coombs	(613) 525-1700	(613) 525-4173		LBS	
Upper Grand D.S.B.*See Well.Ca.D.S.B.	Gerard Tessaro	(519) 836-7281	(519) 837-0244		DCR,COR,NCR,SCR,SEL,ILE	
	Murray Shannon	(519) 836-7281	(519) 837-0244	mshannon@conted.ugdsb.on.ca	DGI,NGI,ESL,LIN,LBS	
Waterloo Cath. D.S.B.	Gina Pagliaroli	(519) 651-2020	(519) 651-1987	Gina.pagliaroli@wcdsb.edu.on.ca	ATR	
	Alan Green	(519) 745-1201	(519) 745-4277	Alan.green@wcdsb.edu.on.ca	DCR,COR,DGI,NGI,NCR,SCR,SEL	
	Chris Brunk	(519) 745-1201	(519) 745-4277	Chris.brunk@wcdsb.edu.on.ca	ESL	
	Lorraine Lasmanis	(519) 576-1301	(519) 576-0301	Lorraine.lasmanis@wcdsb.edu.on.ca	LIN	
	Lorri Sauve	(519) 650-1250	(519) 650-4999	Lorri.sauve@wcdsb.edu.on.ca	LBS	
	Krystyna Freiburger	(519) 651-2020	(519) 651-1987	Krystyna.freiburger@wcdsb.edu.on.ca	ILE,ICR	
Waterloo Region D.S.B.	Mary Adamson	(519) 740-3800	(519) 740-7362		DCR,COR,LBS	
	Agnes Dufournaud	(519) 885-0800	(519) 885-0123		DCR,SEL,ILE,ICR	
	Ken Lepard	(519) 570-0300	(519) 742-1364		COR,ESL,LIN,ALT	
	Wendy Weiss	(519) 570-0300	(519) 742-1364		NGI	
	Mary King	(519) 623-3600			NCR	
	Peter Ritchie	(519) 658-4910			SCR	
Wellington Cath.D.S.B. (See Upp.Gr.DSB)						
Windsor-Essex Cath.D.S.B.	Bob Gilbert	(519) 972-2727	(519) 966-8738	bob_gilbert@wecdsb.on.ca	DCR,COR,NCR,ICR,ATR,ALT	
	Joanne Shea	(519) 977-6161	(519) 977-7499	joanne_shea@wecdsb.on.ca	SCR,SEL	
	Rosa Cipparone	(519) 253-2481	(519) 253-4819	rosa_cipparone@wecdsb.on.ca	ILE	
York Cath.D.S.B.	Cosimo Modafferi	(416) 221-5051	(905) 841-6940	modaffc@ycdsb.edu.on.ca	All Programs	
York Region D.S.B.	Bryan Kettlewell	(905) 884-2046	(905) 884-3604	bryan.kettlewell@yrdsb.edu.on.ca	DCR,ATR,GED	
	Doug Gardiner	(905) 884-3434	(905) 884-3604	gardnerd@yrbe.edu.on.ca	NGI,NCR,SCR,SEL,ESL,LIN,ILE,ICR	

Legend

ALT	Alternative (Adolescent)	ECR	ESL for Credit	NCR	Night School Credit
ATR	Adult Training	FCR	FSL for Credit	NGI	Night School General Interest
COR	Correspondence/Self-Study	GED	General Ed. Dev't	PSW	Personal Support Worker
DCR	Adult Day Credit	ICR	Int. Lang. For Credit	SCR	Summer School Credit
DGI	Adult Day General Interest	ILE	Int. Lang. Elem.	SEL	Summer School Elementary
ESL	Adult Eng. as a Sec.Lang.	LBS	Literacy Basic Skills		
FSL	Adult Fren. as a Sec. Lang.	LIN	Lang. Inst. For New Canadians		

Appendix D: Other Urgent Situations in ACE (As Reported by Responding Boards)

- Funding levels for: large (area) boards with smaller populations, student support; distance education.
- Funding for adult students too low; impact of OSS/PLAR; computer funding...non existent for adult students
- Inadequate funding for credit activity
- Transportation – summer school
- Reform (remedial) courses in French; average class; funding for FSL
- Funding for the federal for youth program is not enough when you have to satisfy all the other strings attached to that funding; giving us \$2294 per adult student and asking us to staff statutory (form1) teacher at 21:1
- Maintaining enrolment; Ministry funding
- Availability of SSR curriculum for home study; Lack of administrative support for programs
- Inadequate funding for Remedial/Family; Literacy Programs; Inadequate funding for Literacy programs
- Funding of gr. 7 to 10 remedial literacy programs
- PLAR most urgent
- Staffing; funding over 21's; capital acquisitions
- Penalization due to allocation formula re. Con.Ed buildings; lack of funding for computerization of student records and follow-up; lack of funding for new high school credit courses to come on stream
- Capacity issues; no funding for program supervision (admin. salaries) or for facility use
- Would like pre 1996 funding model returned (Adult Day School); would like at least 1/2 credits in Con. Ed.; would like a count date for Con. Ed registers.
- Lack of consideration of small enrolment communities by Ministry; difficulty finding qualified staff for low pay; lack of ILC material for new curriculum
- LBS - school boards need to work together at the Director, Superintendent level
- Due to closure of school board owned facilities it is very difficult to generate sufficient revenue to cover lease costs and fixed costs for facilities.
- Daytime ESL programs should generate accommodation grant
- Qualified teachers are harder to find for credit programs
- It is increasingly difficult to operate at cost recovery due to collective agreements, all staff now part of a union, increased costs in all budget areas but no corresponding increase in grant.
- We need the ability to charge a fee for high cost programs to offset the costs not covered by the grant generated through credit registers.
- Further clarification is needed on short forms that are used I.e. LBC
- Rising staff costs from new collective agreements; rising lease costs and no increase in operations grant for adults; funding based on attendance rather than on registration/enrolment
- Facilities issues in non-credit programs; administrative requirements of LINC very different from provincial model with related difficulties in administering the two programs jointly
- PLAR needs to be “grandfathered” based on date of entry into high school and diploma requirements